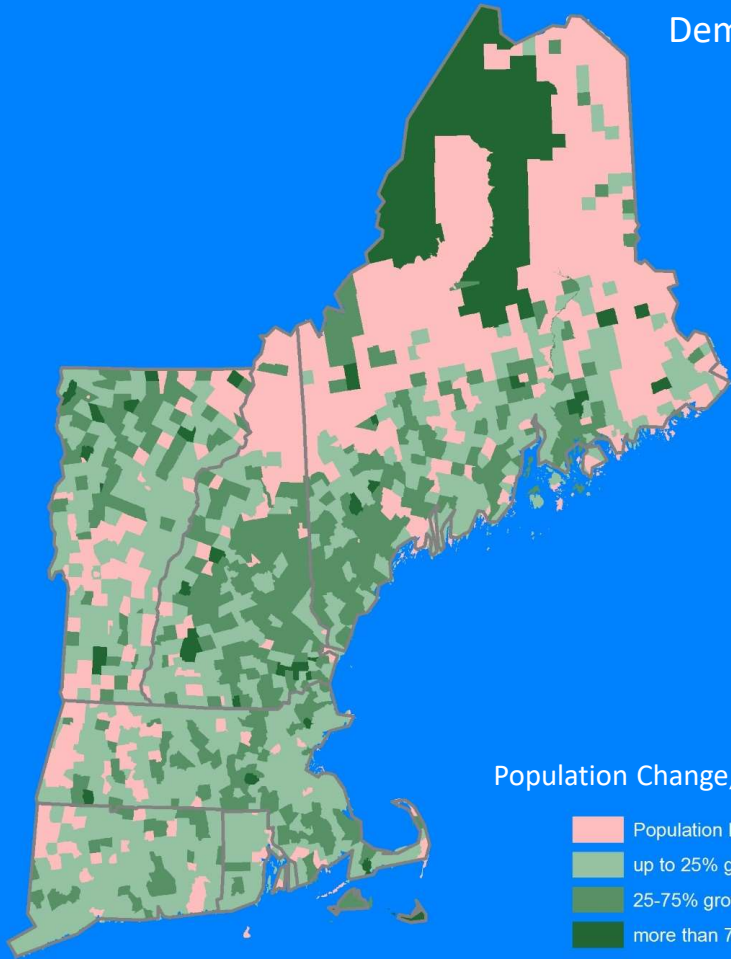
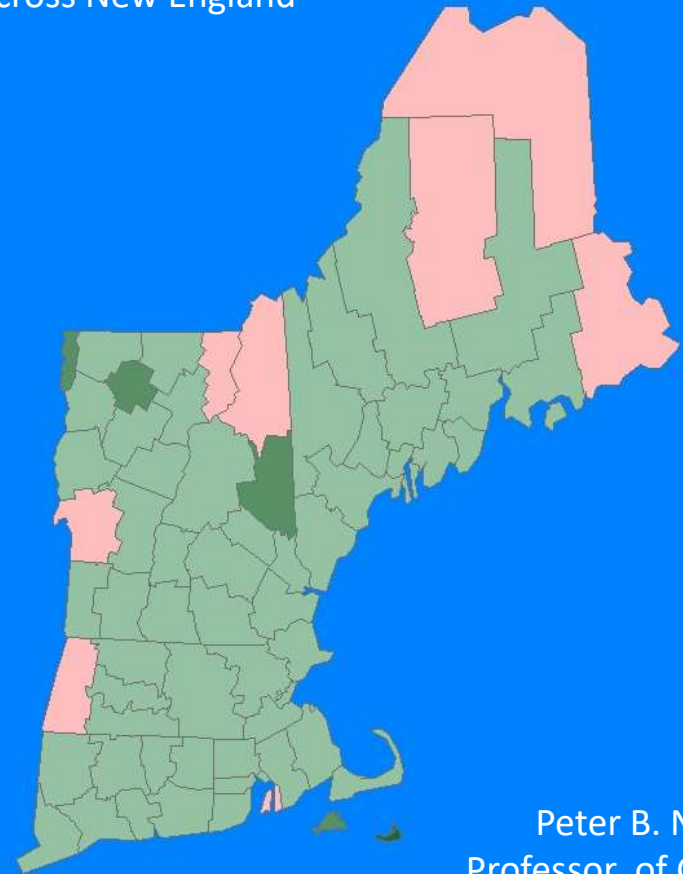


Demographic Change Across New England



Population Change, 1990-2017

- Population Loss
- up to 25% growth
- 25-75% growth
- more than 75% growth

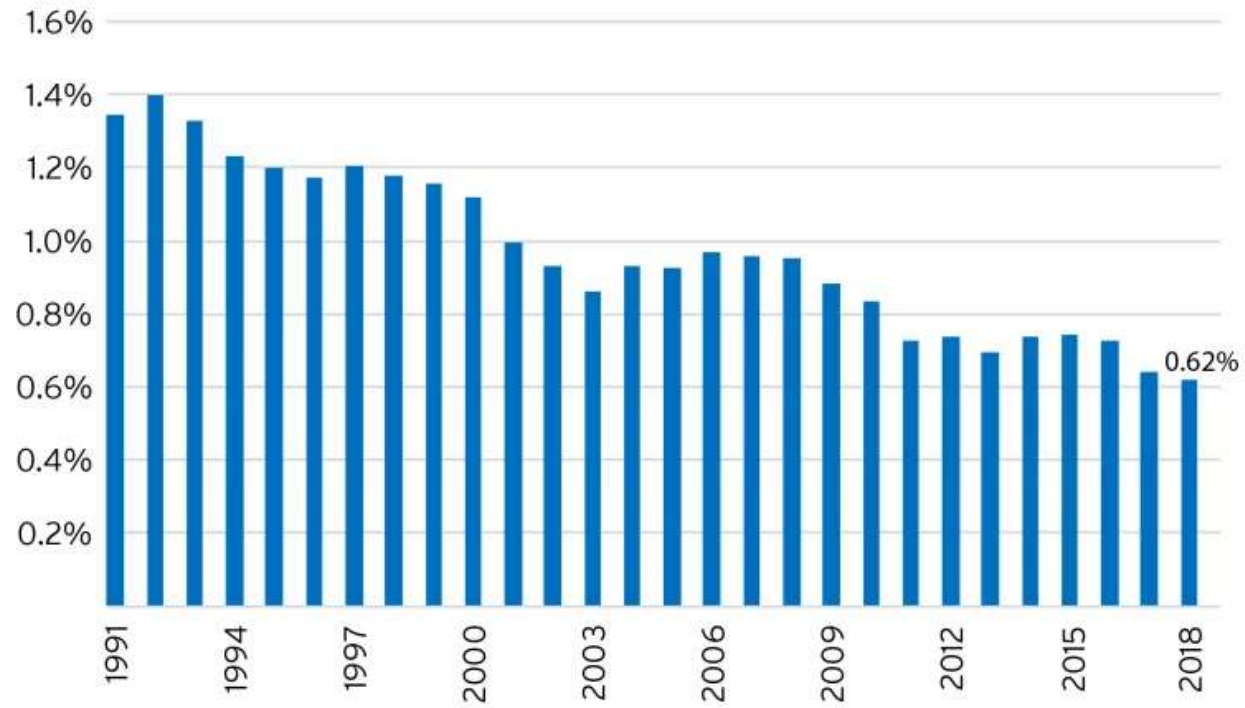


Peter B. Nelson
Professor of Geography
Middlebury College

FIGURE 1

U.S. annual population growth

1990-2018



Note: Year shown represents the preceding 12 month period ending July 1.

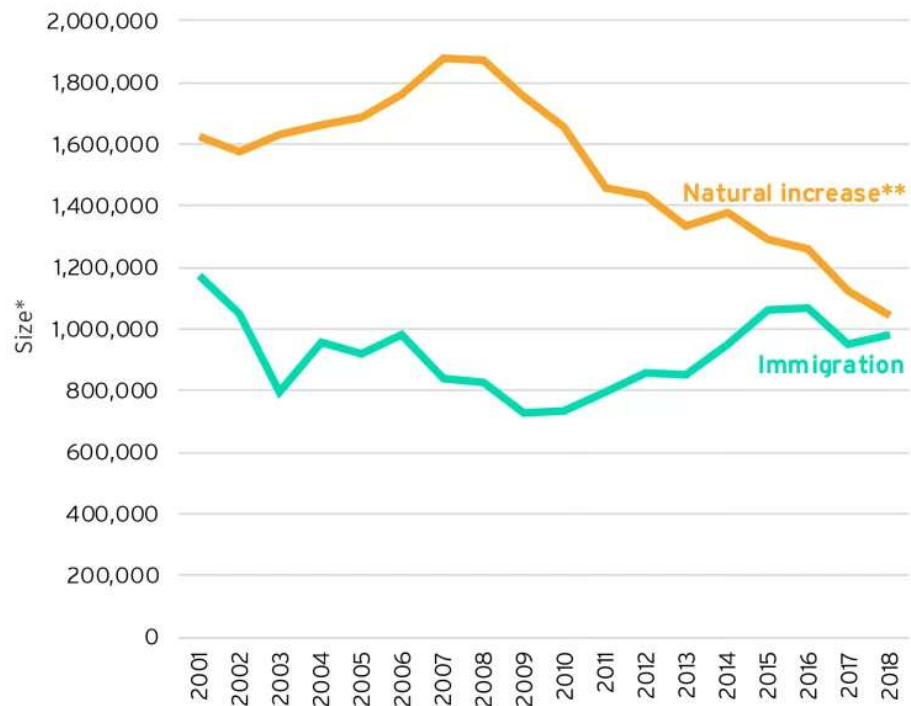
Source: William H. Frey analysis of U.S. Census Bureau population estimates, released December 19, 2018

B Metropolitan Policy Program
at BROOKINGS

FIGURE 2

U.S. immigration and natural increase

2000-2018



*Size of immigration and natural increase for 12 month period prior to July 1 of year shown.

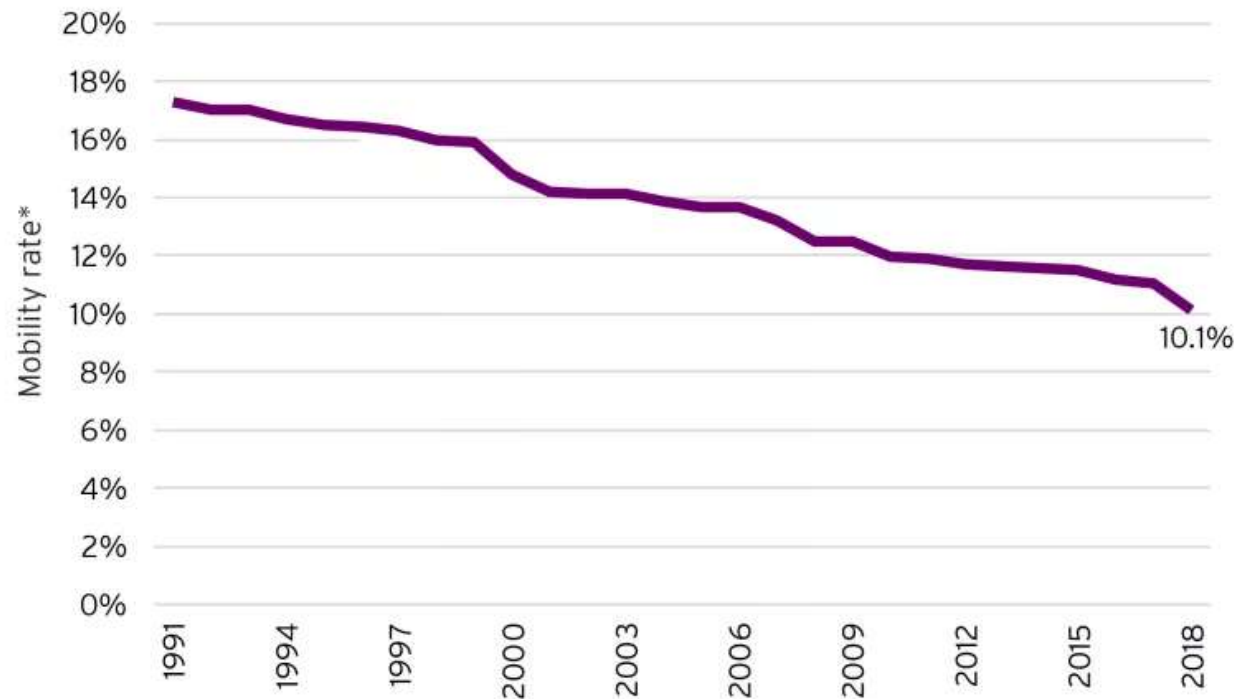
**Natural increase equals the number of births minus the number of deaths.

Source: William H. Frey analysis of U.S. Census Bureau estimates, released December 19, 2018

FIGURE 3

Annual rate of geographic mobility

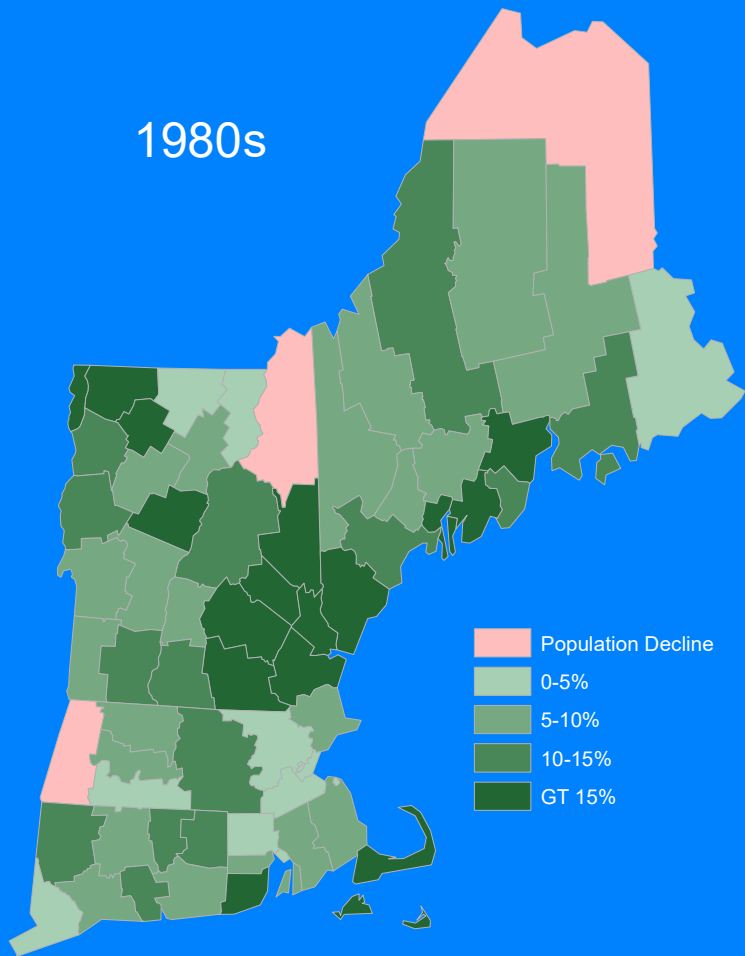
1990-2018



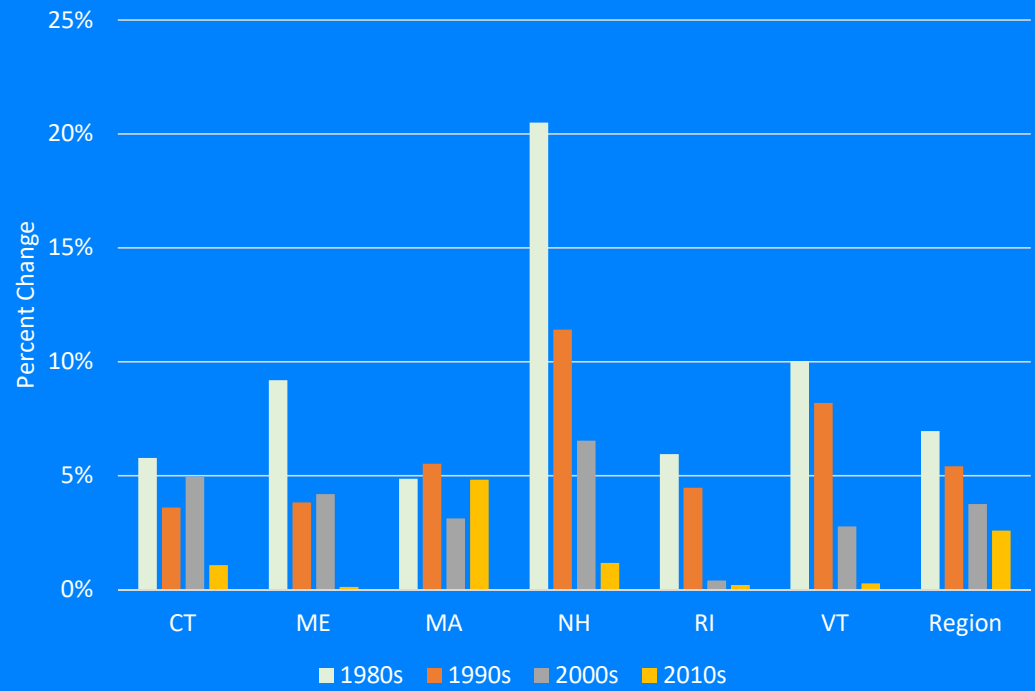
*Mobility rate is defined as the percent of the population changing residences over the 12 month period ending in March of the year shown.

Source: William H. Frey analysis of U.S. Census Bureau Current Population ASEC Supplement released November 27, 2018

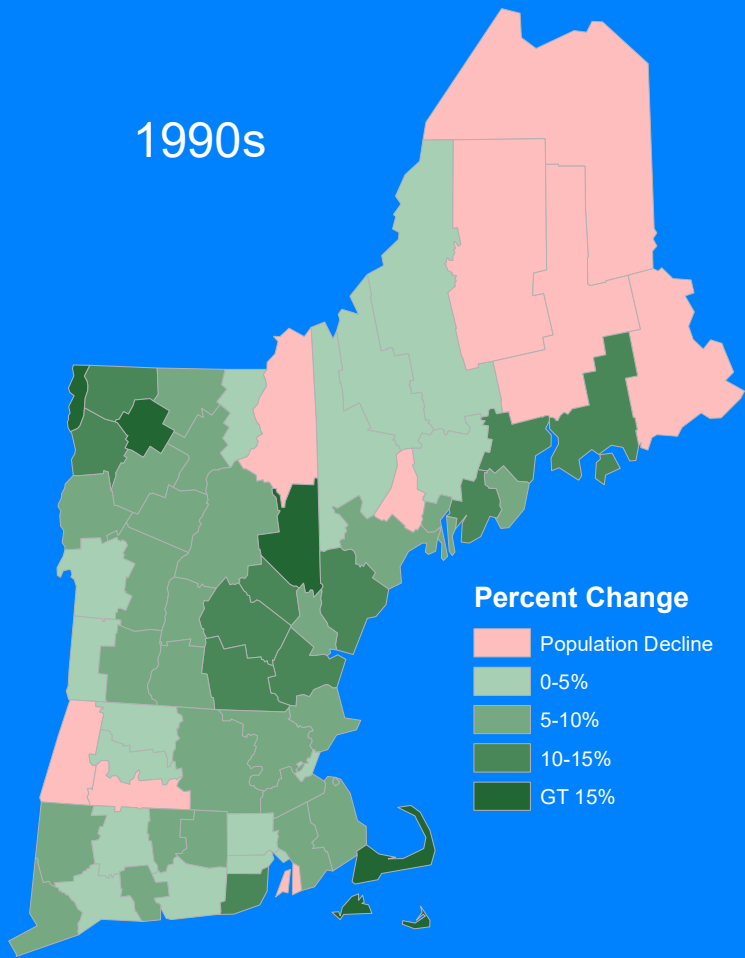
1980s



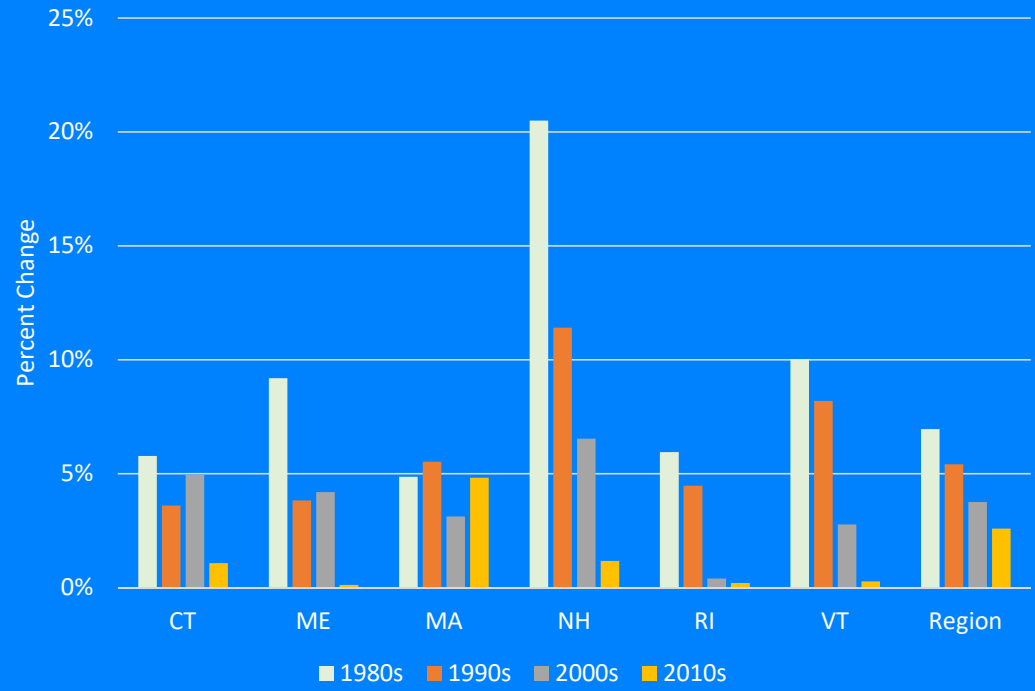
Population Change in New England



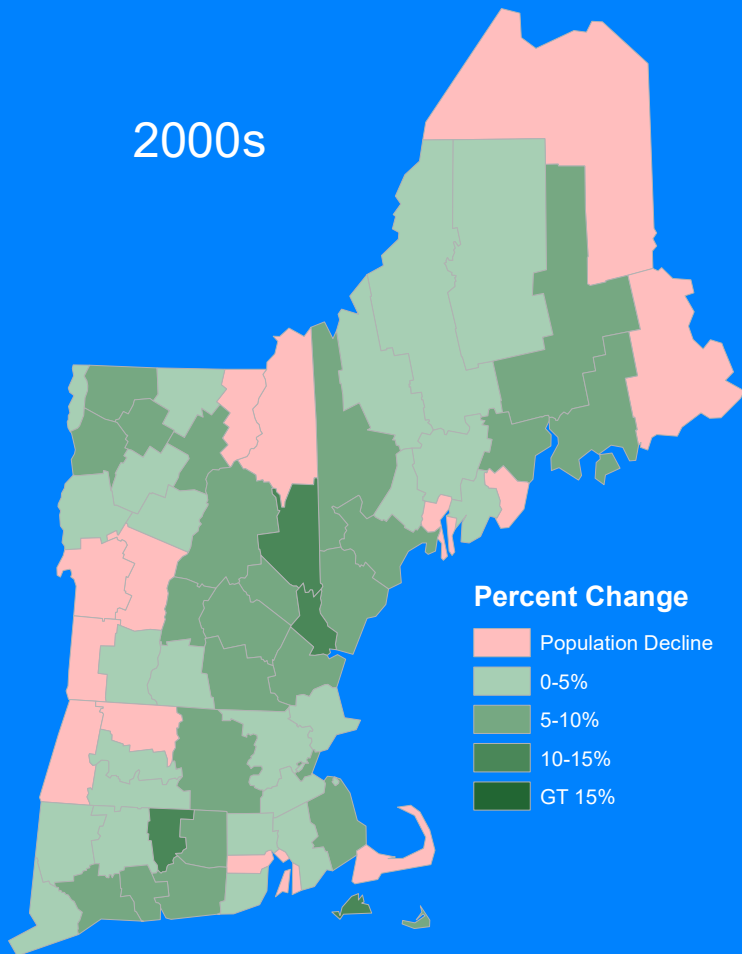
1990s



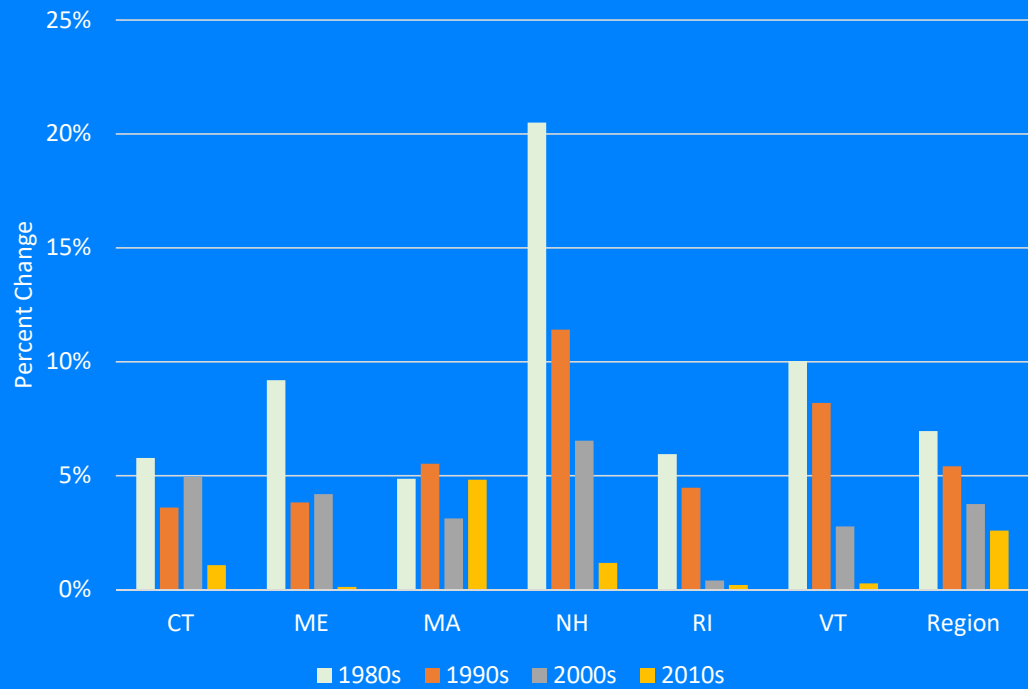
Population Change in New England



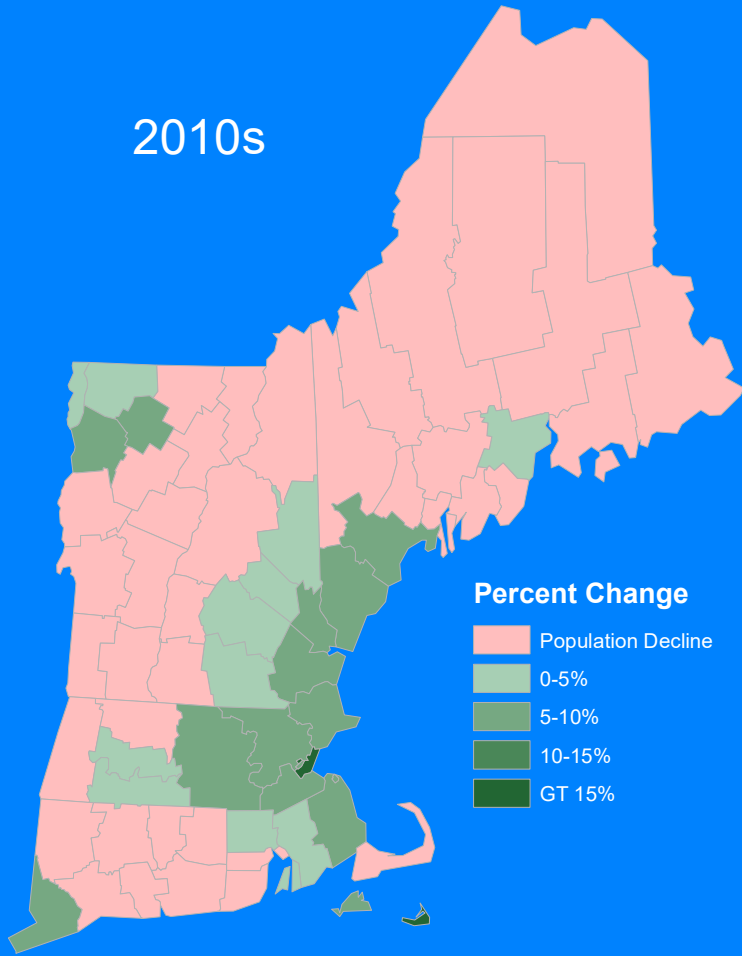
2000s



Population Change in New England



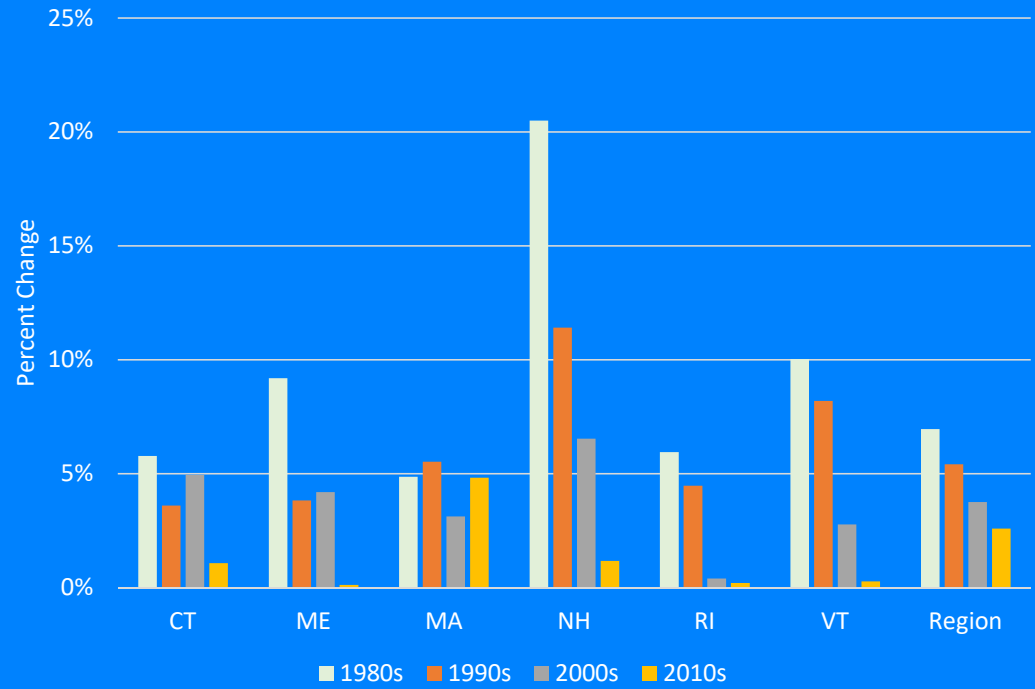
2010s



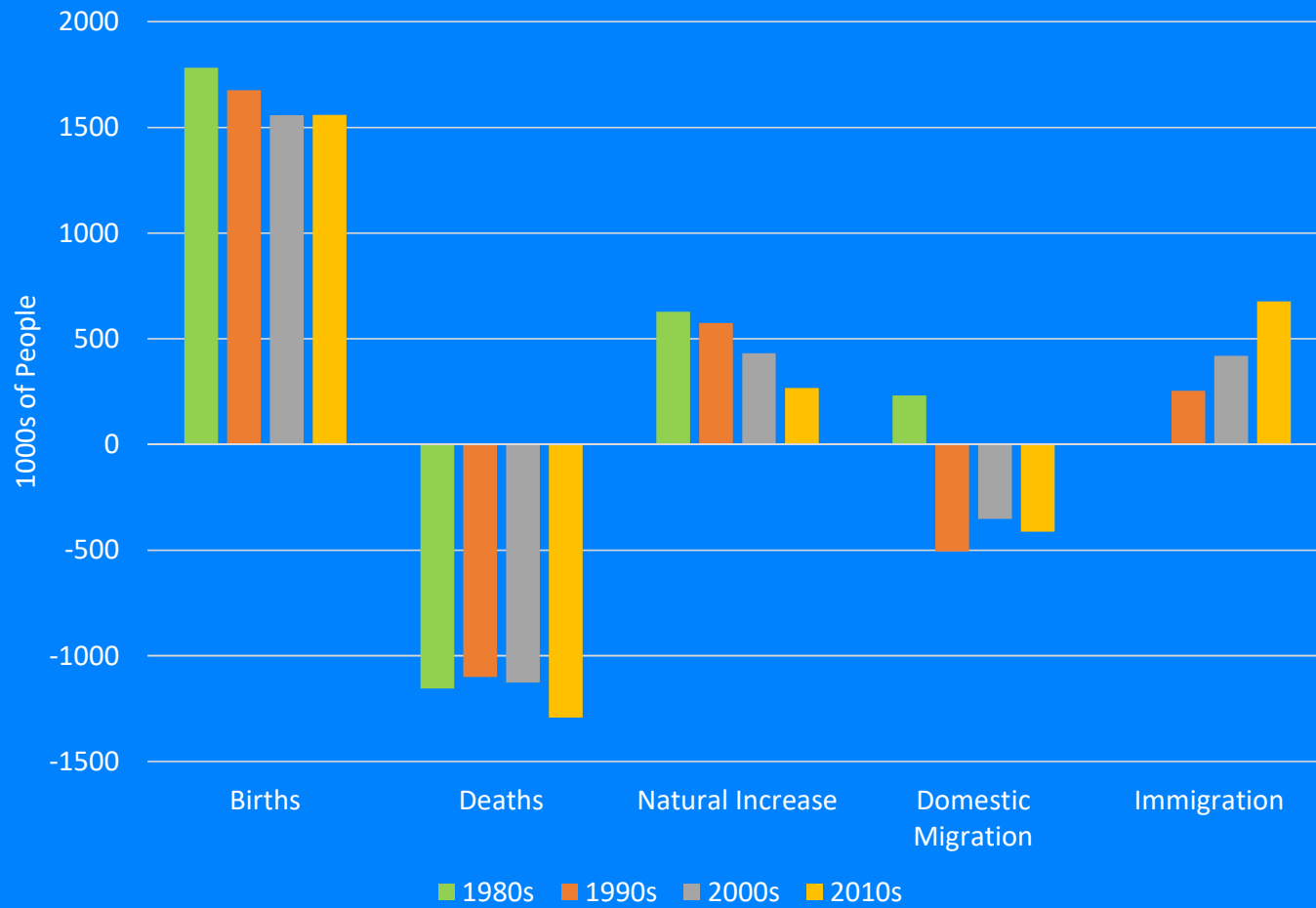
Percent Change

- Population Decline
- 0-5%
- 5-10%
- 10-15%
- GT 15%

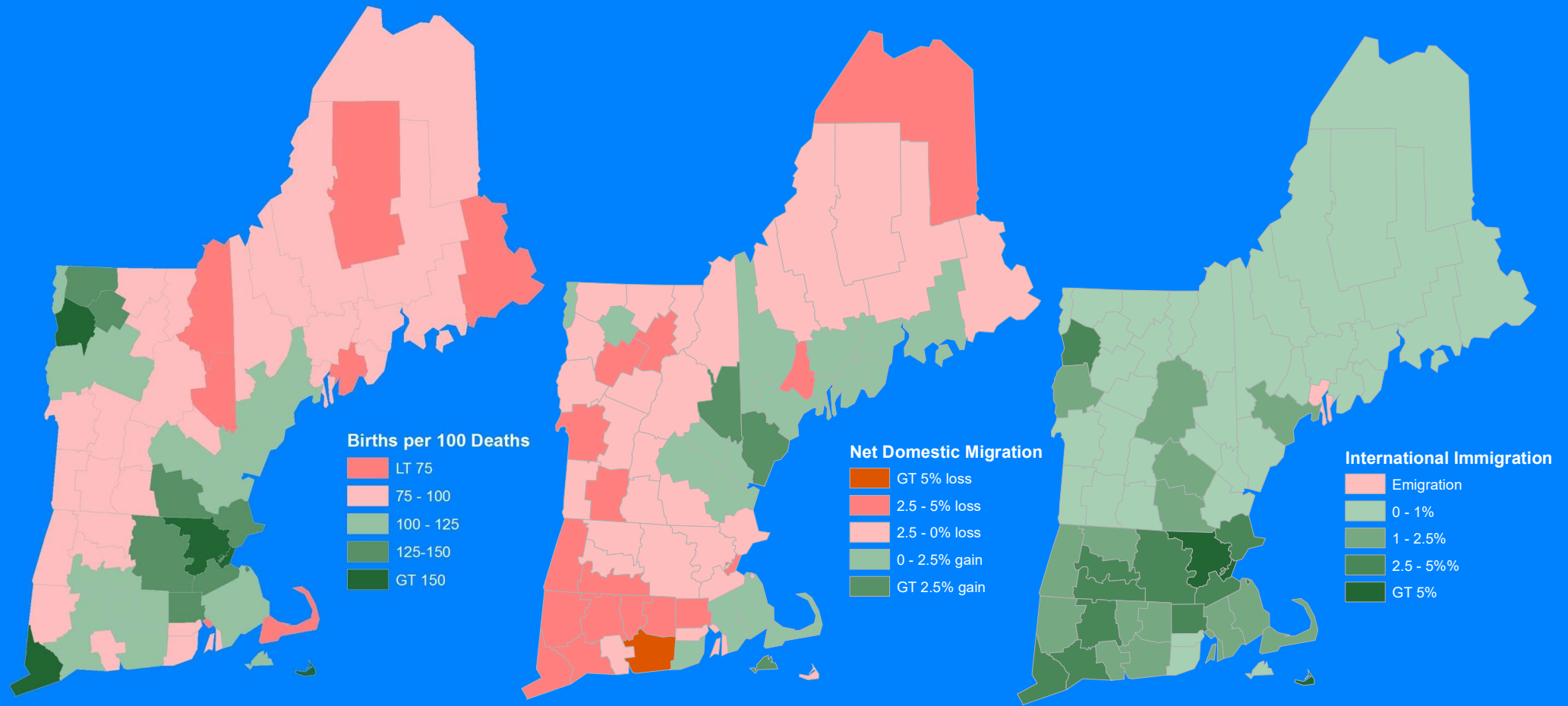
Population Change in New England



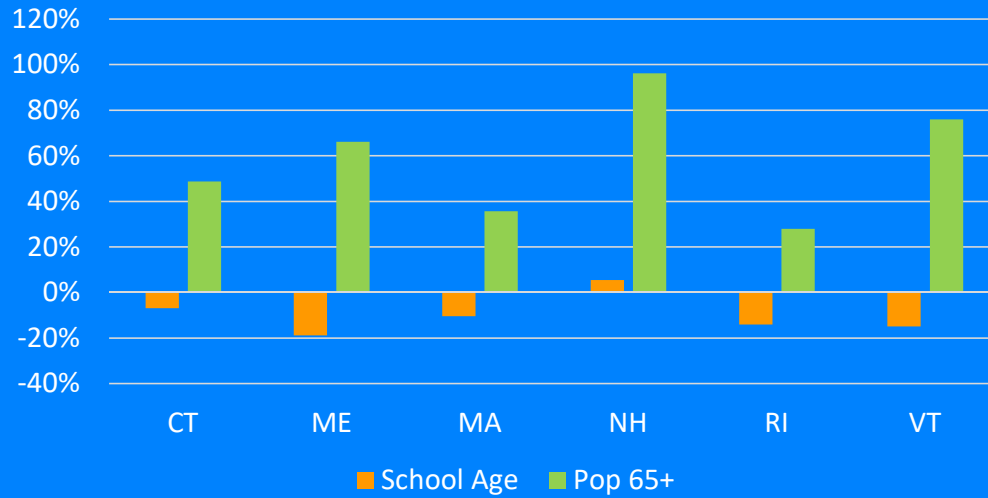
Components of Population Change



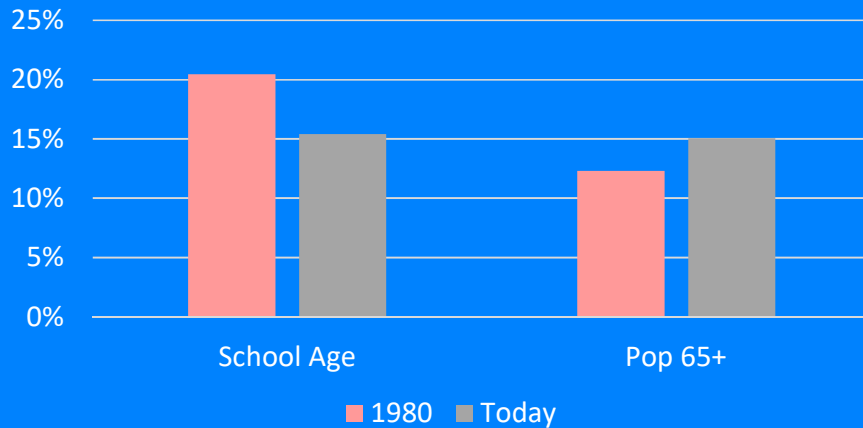
Drivers of Population Change 2010 to present



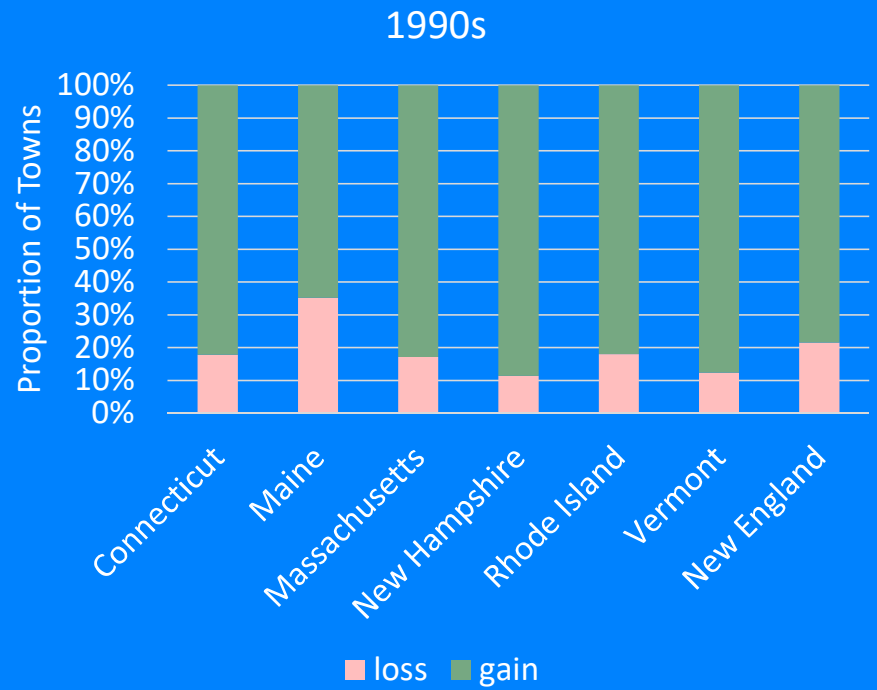
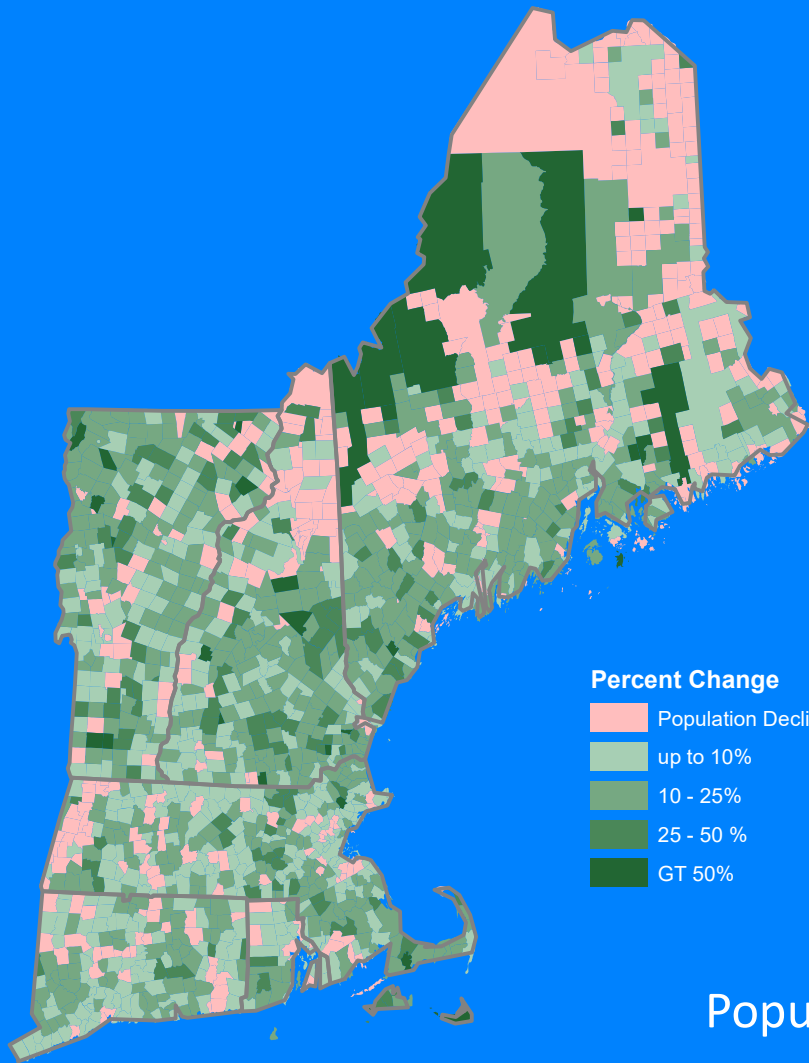
Population Change by Age Group,
1980 to present



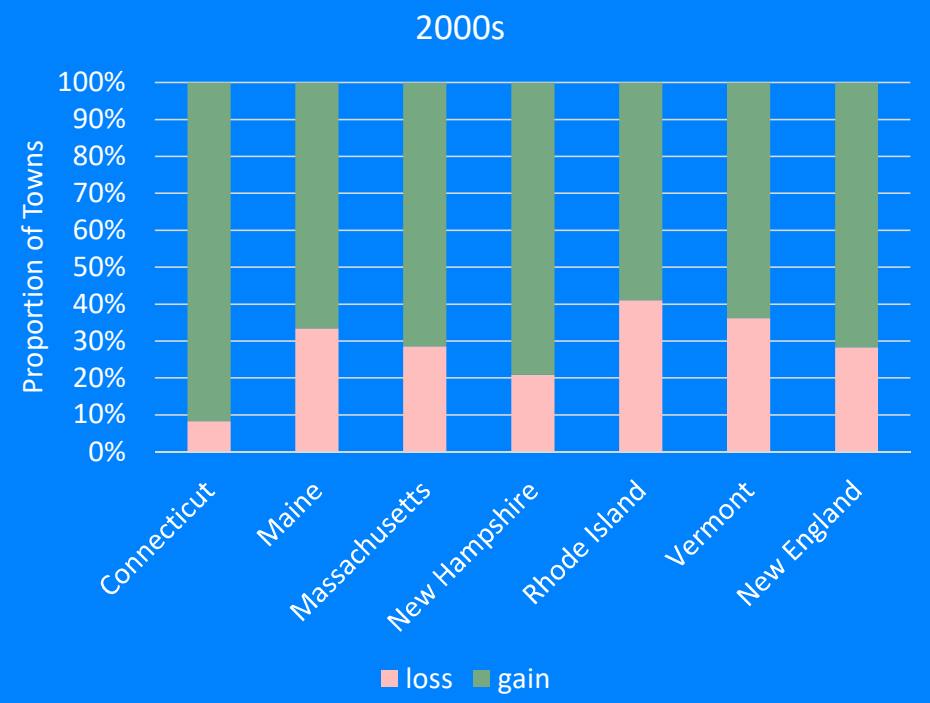
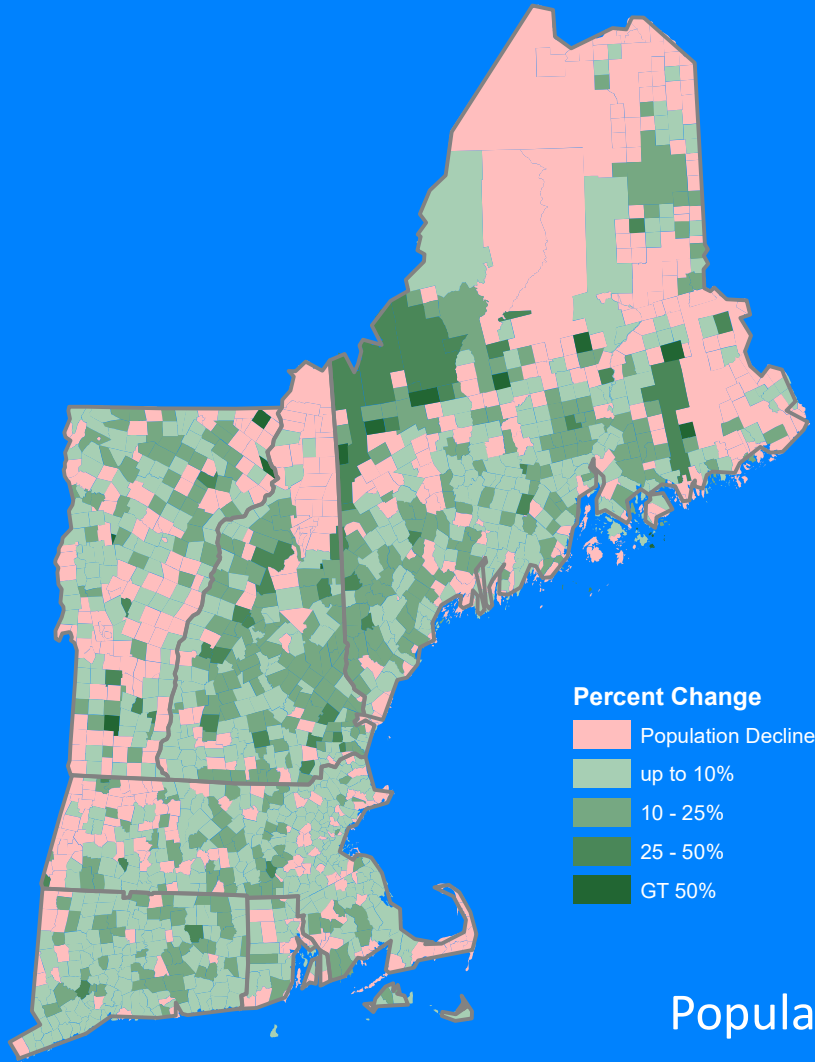
Share of Total Population, New England



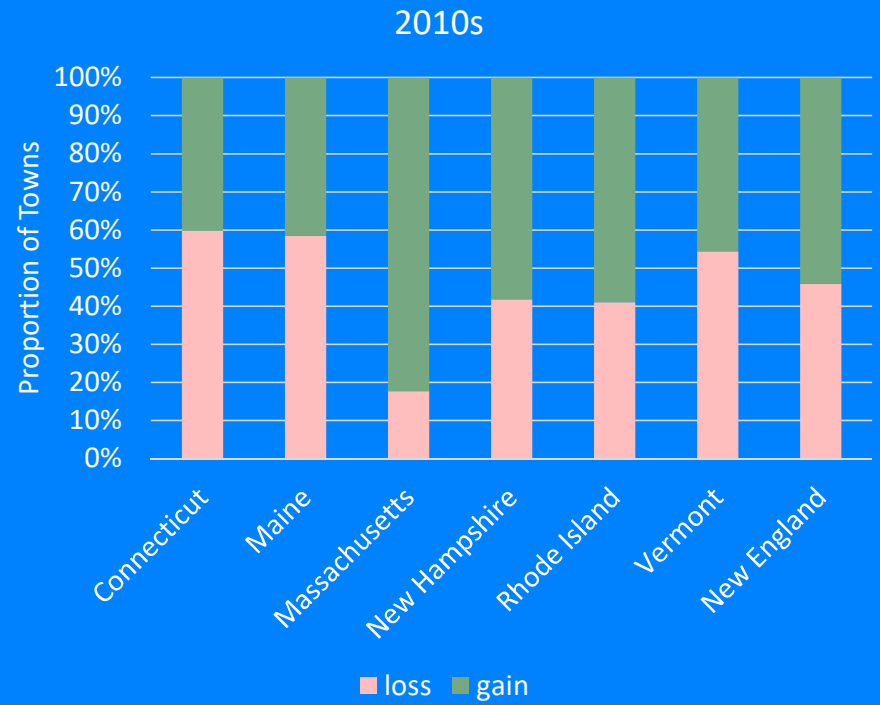
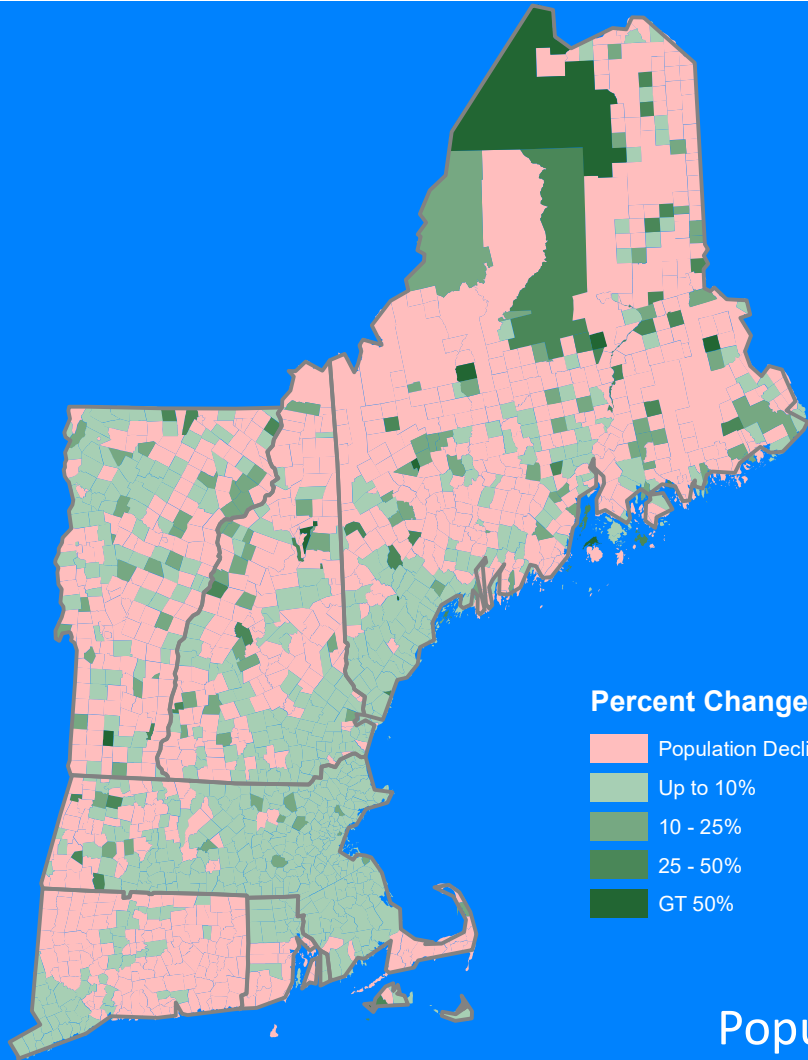
- ME's school age population decreased by 46,000
- VT's population over age 65 increased by 44,100



Population Change in New England Towns

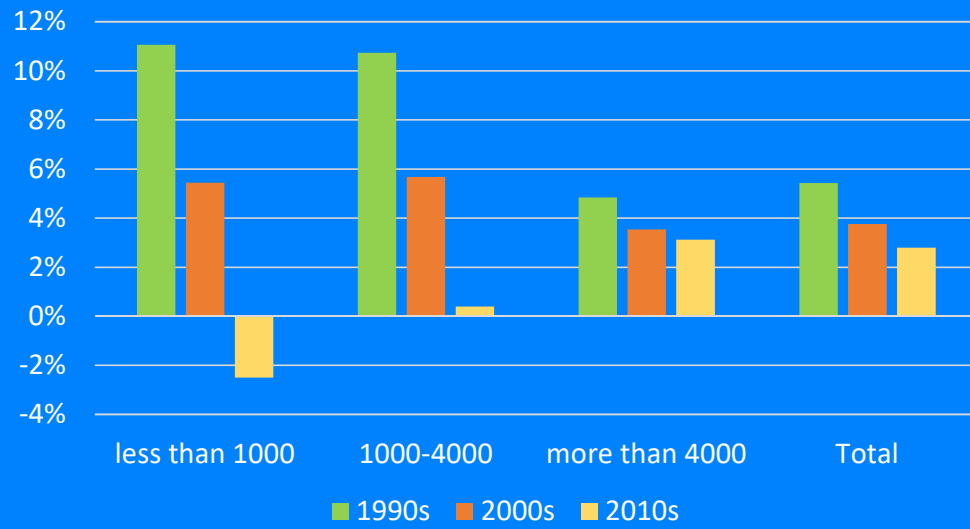


Population Change in New England Towns

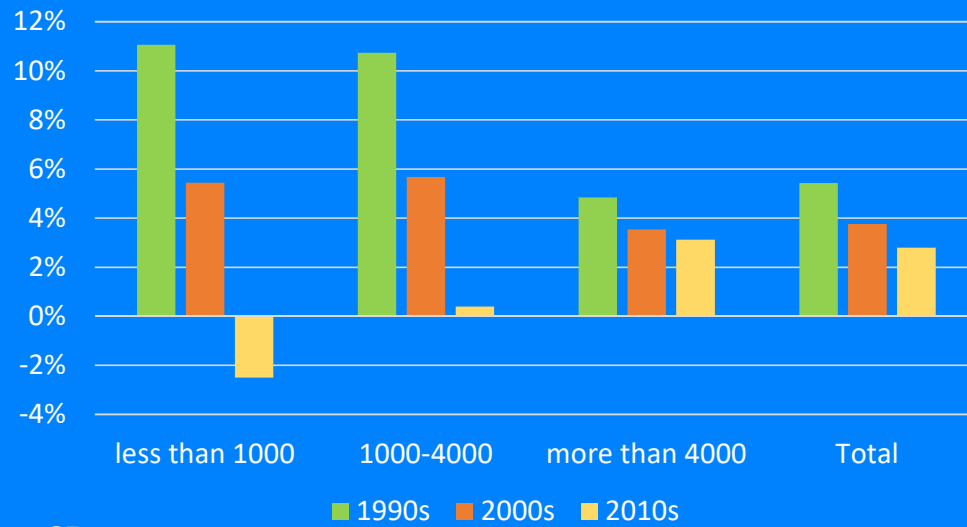


Population Change in New England Towns

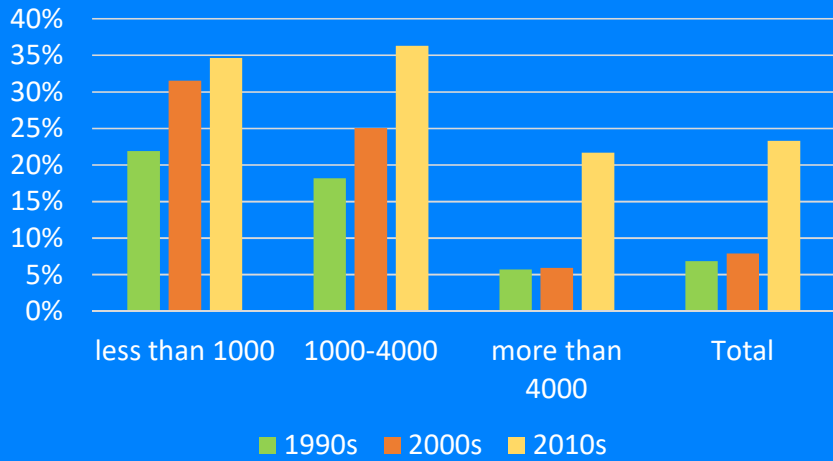
Total Population Change



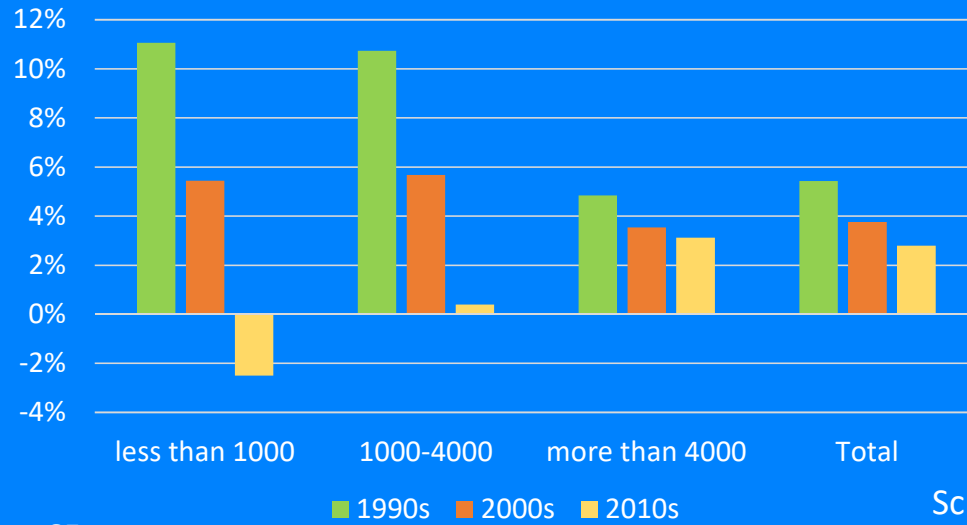
Total Population Change



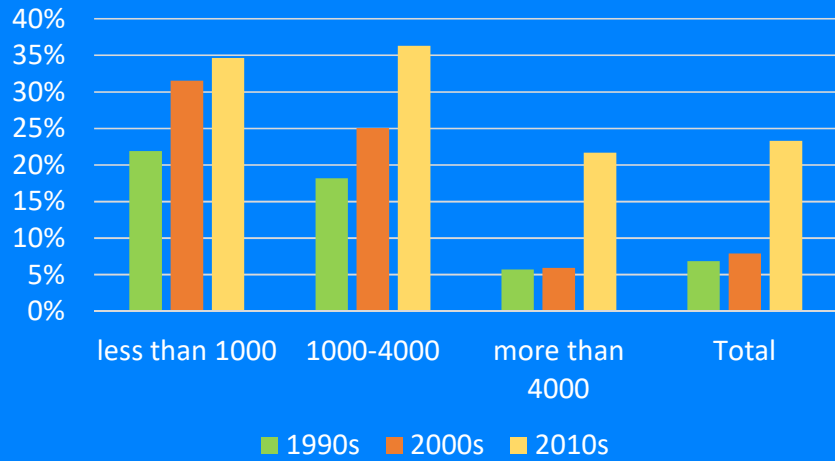
Population over age 65



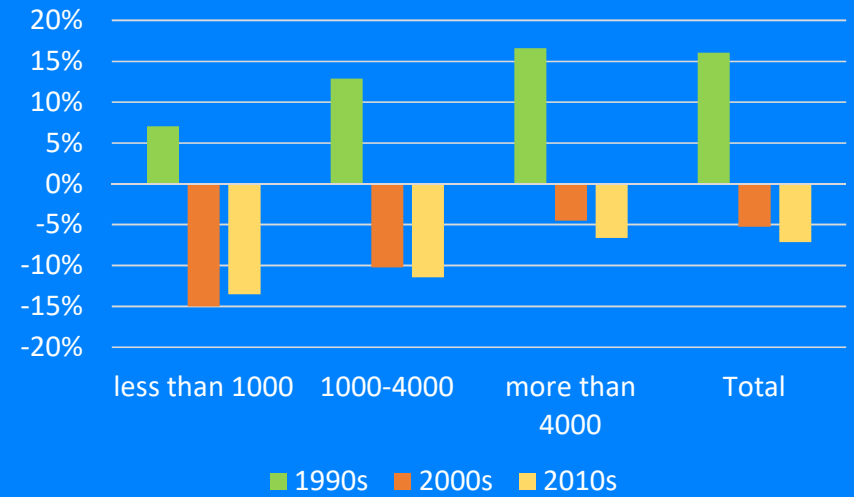
Total Population Change



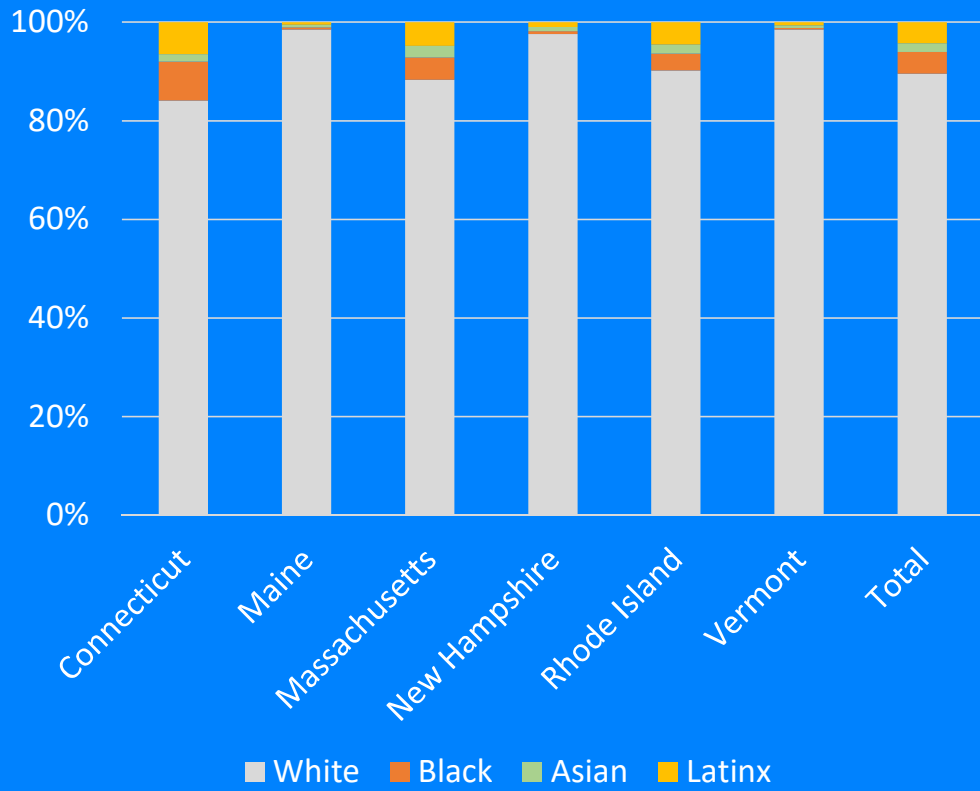
Population over age 65



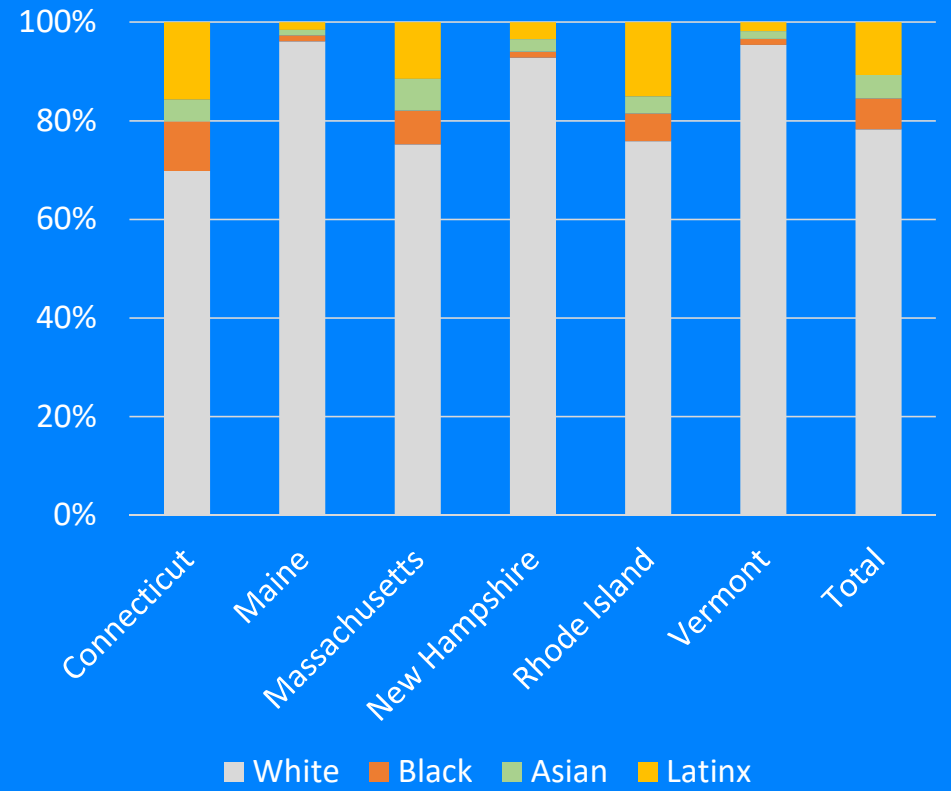
School Age Population



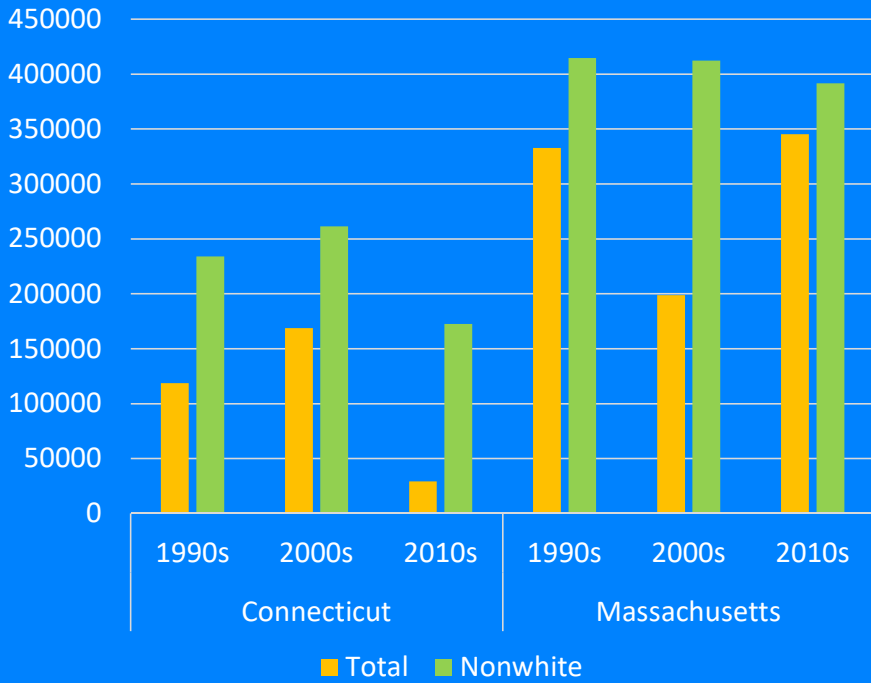
1990



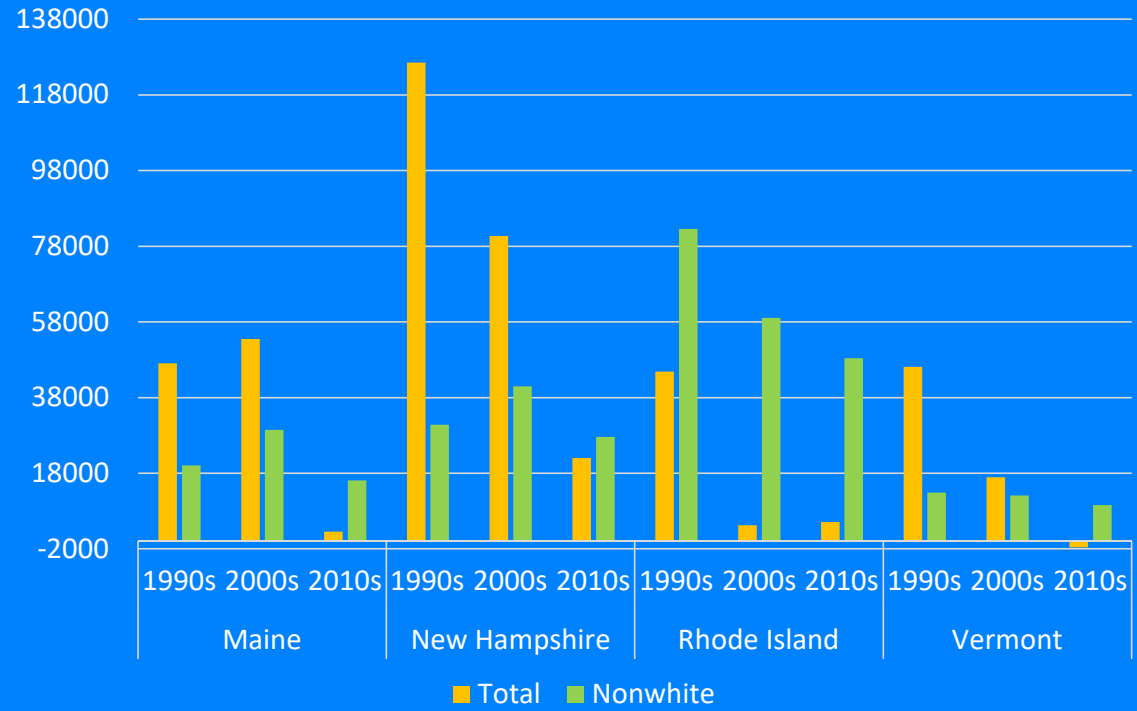
2017



Population Change



Population Change





Conclusions

1. New England faces unique demographic challenges
2. Rising out-migration + lowering natural increase = aging population
3. These processes vary geographically and across the urban hierarchy
4. Diversity is increasing in all parts of the region